

# Dream Day

**Saturday 12 October**  
Gates open 9am until 5pm

- Toilet
- Lockers
- Baby changing
- Parents room
- Accessible toilet
- Changing Places toilet
- Food hub
- Refreshments
- Drinking water
- Phone charging station
- Information
- First aid  
Alert a staff member if you require first aid.
- Zoo Shop

The Zoo is smoke-free  
Pass-outs are available from gate staff.

Animals will begin going to bed at 4:30pm.

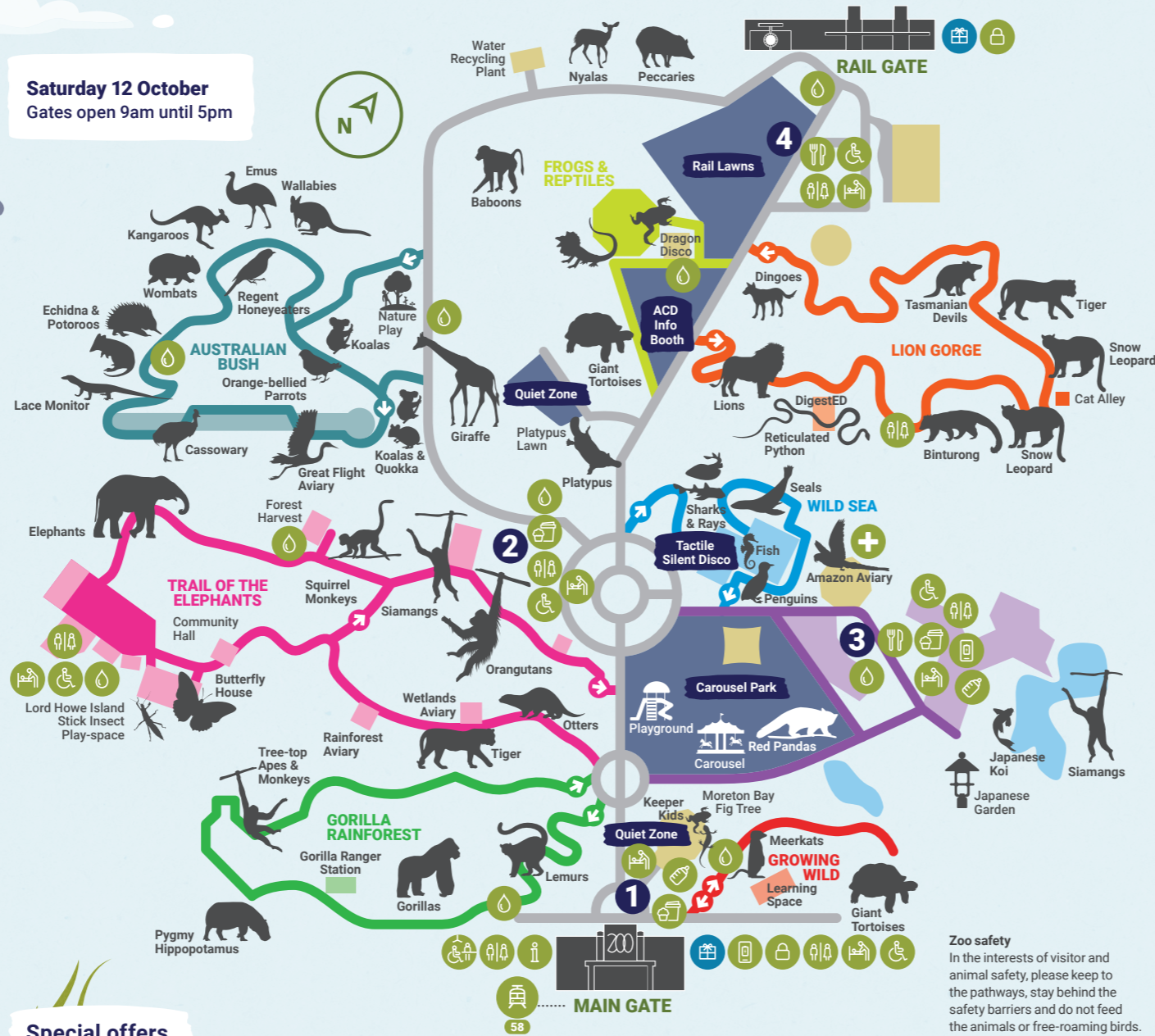
## Special offers

**A RANGE OF FREE SCHWEPPE'S SOFT DRINK CANS AND SPARKLING WATER**

Thanks to our friends at Schweppes

**FREE SELECTED STREETS PADDLE POP ICE CREAMS FROM THE RAIL LAWNS**

Thanks to our friends at Streets



**Zoo safety**  
In the interests of visitor and animal safety, please keep to the pathways, stay behind the safety barriers and do not feed the animals or free-roaming birds.

## Activities 10am – 3pm

### Rail Lawns

Ice Cream and Soft Drink Zone  
LEGO Playzone  
Kidz Party DJ  
Photobooth  
Airbrush Tattoos  
Playgroup Victoria Play Zone  
Toy Libraries Australia Play Zone

### Boats – By Polyglot Theatre

Come and play as you please between:  
10:00am – 12:00pm morning session  
1:00pm – 3:00pm afternoon session

### Carousel Park

Badge Making  
Liberty Swing  
Carousel Rides  
Playground  
Drinks station

### Wild Seas

Feel the Beat Tactile Silent Disco

### Quiet Zones

Platypus Lawn  
Keeper Kids

### Roving entertainment

Botanical Beauties  
Bubble artist  
EscarGlow

## Where to eat

- 1 Meerkat Café**  
9am – 5pm  
Serving pastries, sandwiches, salads, snacks, drinks and coffee
- 2 Giraffe Café**  
9am – 4pm  
Serving bakery snacks, drinks and coffee

## Keeper talks

**Auslan Interpreters will interpret all talks**

- |   |         |  |
|---|---------|--|
| <b>Orangutans</b>                           | 10:30am |  |
| <b>Baboons</b>                              | 10:40am |  |
| <b>Elephants</b>                            | 11am    |  |
| <b>Koala</b>                                | 11am    |  |
| <b>Giraffe</b>                              | 11:30am |  |
| <b>Snow Leopard</b>                         | 11:45am |  |
| <b>Seals</b>                                | 12:20pm |  |
| <b>Lions</b>                                | 12:30pm |  |
| <b>Gorilla</b>                              | 1:15pm  |  |
| <b>Meerkats</b>                             | 1:15pm  |  |
| <b>Giant Tortoises</b> <i>Growing Wild</i>  | 1:30pm  |  |
| <b>Elephants</b>                            | 2pm     |  |
| <b>Pygmy Hippo</b>                          | 2:30pm  |  |
| <b>Tigers</b> <i>Trail of the Elephants</i> | 3:30pm  |  |
| <b>Penguins</b>                             | 4:00pm  |  |

- 3 Macaw Takeaway**  
9am – 3pm  
Serving hot food, dino nuggets, sandwiches, salads, snacks and cold drinks
- 4 Rail Gate Café**  
9am – 5pm  
Serving hot chips, hot dogs, bakery snacks, sandwiches, snacks, drinks and coffee

MELBOURNE ZOO

SUPPORTED BY

Association for Children with a Disability

BOWNESS FAMILY FOUNDATION

MELBOURNE AIRPORT


RA venues

Schweppes

STREETS

# Dream Day

## Sensory map

-  High visitation
-  Loud noises
-  Low lighting
-  Strong smells
-  Free ranging animals



MELBOURNE ZOO

SUPPORTED BY



MELBOURNE AIRPORT

RA venues

